

55 BROMFIELD | 15 BOSWORTH

Boston, MA 02108

3,856 sf restaurant building for lease (SUBDIVISABLE)

3 spaces; 1) Eat in restaurant and bar, 2) Take out restaurant w/catering basement, and 3) Hair Salon
Fully equipped - Kitchen venting and Ansul systems in place - 2AM Wine Malt Cordials license (optional)

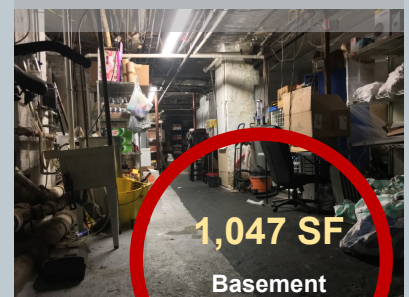
CRE
Brokerage
SPECIALISTS IN COMMERCIAL REAL ESTATE
Joe Levanto 617 504 0363



ENTRY TO TAVERN AT
15 BOSWORTH STREET



BASEMENT
PRODUCTION AREA



Note: Every effort has been made to furnish the most accurate information available on this property. However, all statements and conditions contained herein are subject to errors, omissions, prior lease, sale or removal from the market without notice.

55 BROMFIELD | 15 BOSWORTH

Boston, MA 02108

location

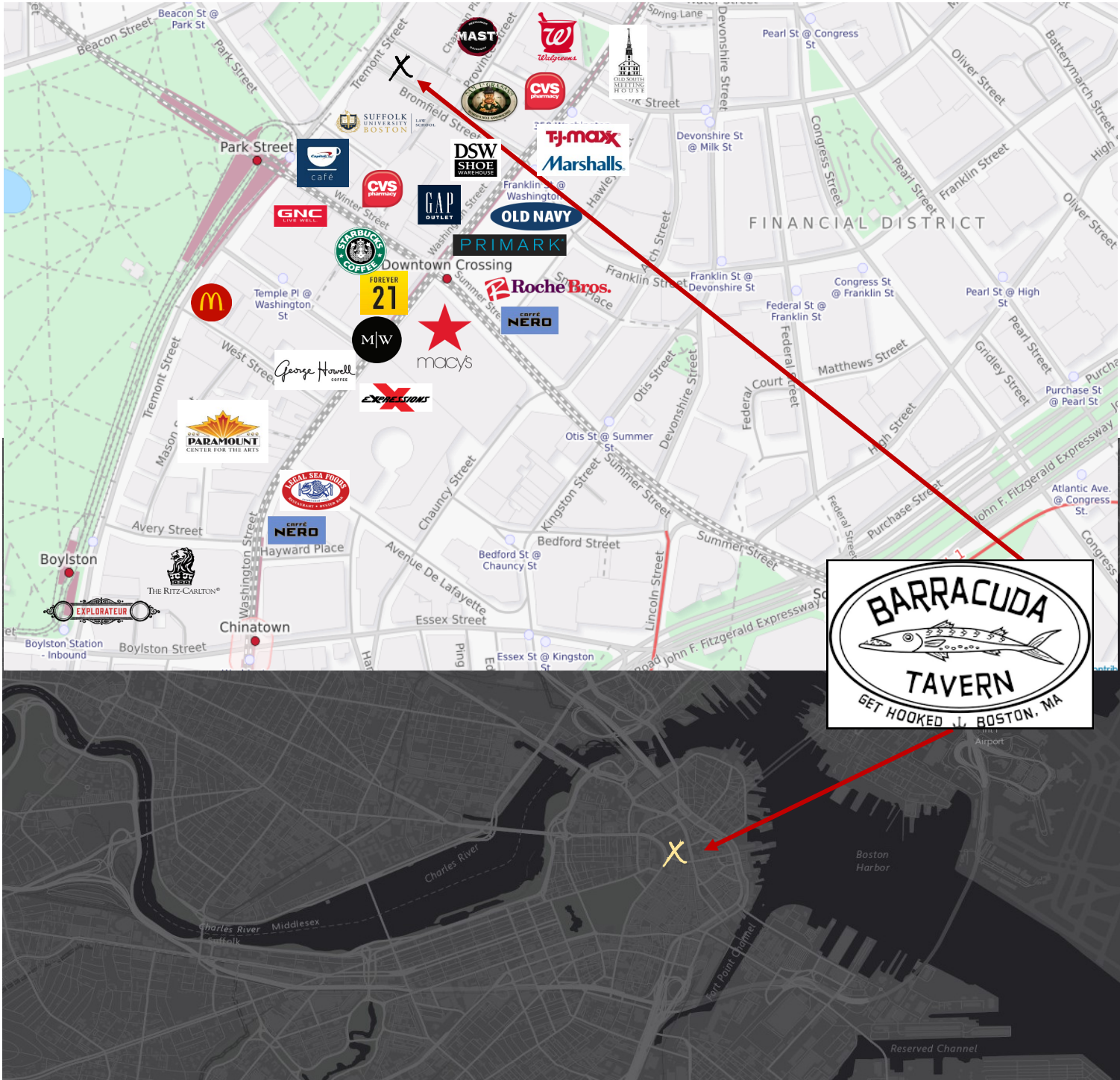
Seven Day Downtown Crossing Location

~250,000 - 320,000 people enter the Downtown Crossing District *each day*



SPECIALISTS IN COMMERCIAL REAL ESTATE

Joe Levanto 617 504 0363



Note: Every effort has been made to furnish the most accurate information available on this property. However, all statements and conditions contained herein are subject to errors, omissions, prior lease, sale or removal from the market without notice.

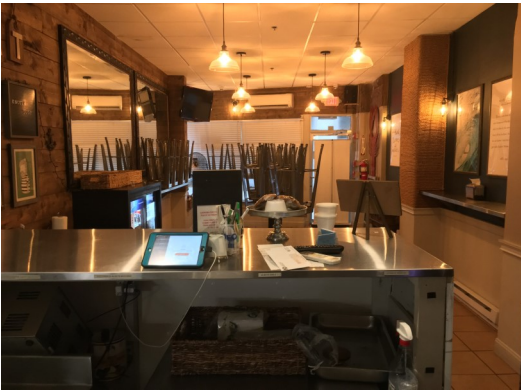
55 BROMFIELD

Boston, MA 02108

Former "On-The Fly" take out restaurant

PICS AND SPECS

CRE
Brokerage
SPECIALISTS IN COMMERCIAL REAL ESTATE
JOE LEVANTO 617 504 0363



DINING AREA WITH 18 SEATS

10' 6" CEILING



TAKE OUT COUNTER



KITCHEN WITH HOOD AND VENT

6' 6" CEILING



KITCHEN WITH WALK IN FRIDGE



USEABLE PRODUCTION BASEMENT

9' 7" CEILING



- ◇ Full kitchen ventilation system
- ◇ Electric upgrades (2010 & 2017)
- ◇ Electric heat
- ◇ Separate meter for lights, outlets and AC
- ◇ Gas Stove
- ◇ Sprinklers in place
- ◇ Ansul System
- ◇ Fire Alarm
- ◇ Comcast wired
- ◇ Furniture, Fixtures & Equipment included

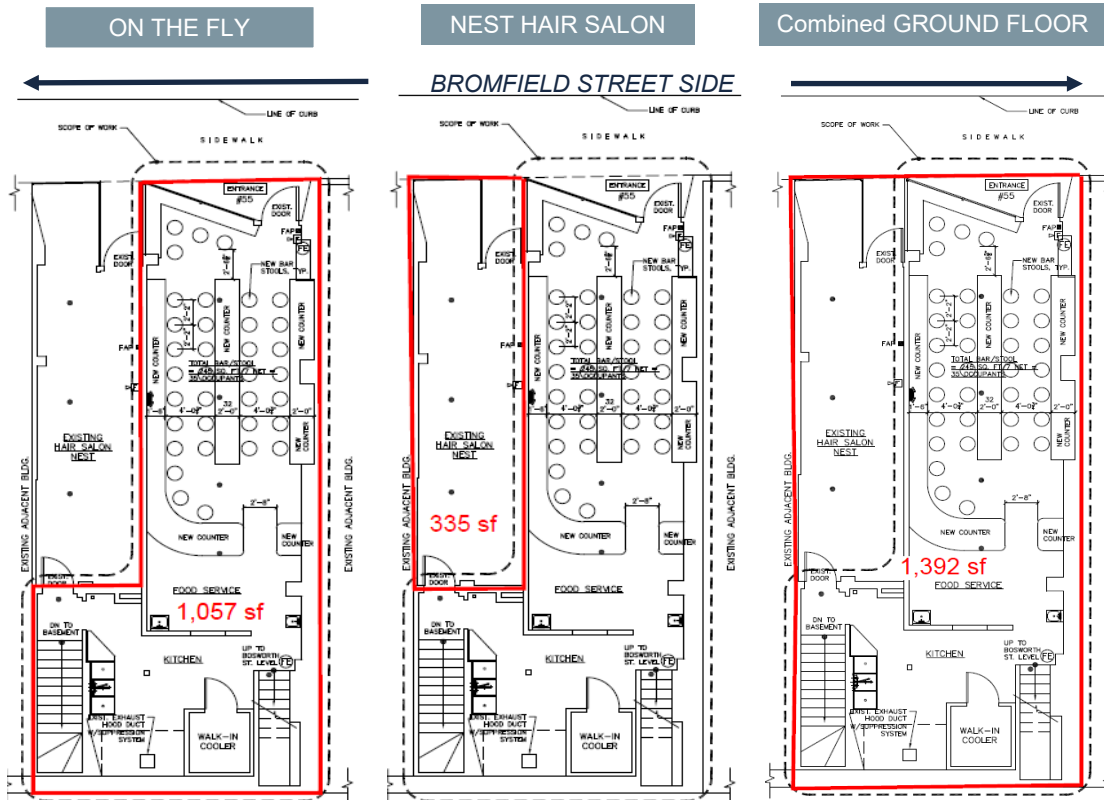
55 BROMFIELD

Boston, MA 02108

Former "On-The Fly" take out restaurant, and
"The Nest" hair salon

FLOOR PLANS; Bromfield Ground floor + Basement

CRE
Brokerage
SPECIALISTS IN COMMERCIAL REAL ESTATE
JOE LEVANTO 617 504 0363



Ground Floor

1,057 SF

restaurant

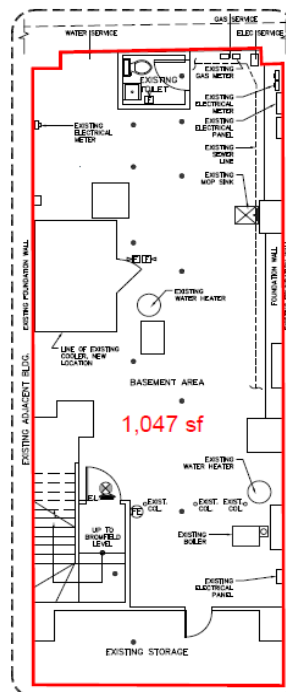
335 SF

hair salon

OR

1,392 SF

combined



Basement

1,047 SF

Kitchen
Storage
Bathroom

Note: Every effort has been made to furnish the most accurate information available on this property. However, all statements and conditions contained herein are subject to errors, omissions, prior lease, sale or removal from the market without notice.

15 BOSWORTH

Boston, MA 02108

Former "Barracuda Tavern" bar and restaurant

PICS AND SPECS

CRE
Brokerage
SPECIALISTS IN COMMERCIAL REAL ESTATE
JOE LEVANTO 617 504 0363



DINING AREA WITH 44 SEATS

12' 11" CEILING



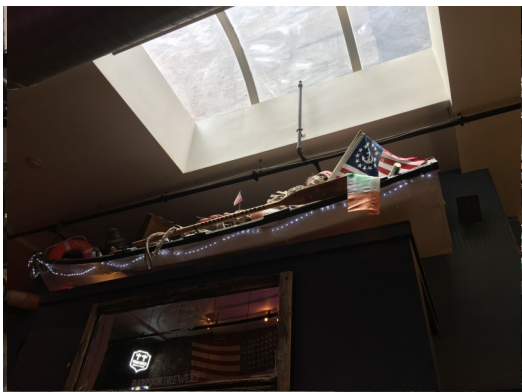
BAR WITH 60 PERSON CAPACITY



KITCHEN WITH WINDOWS, HOOD & VENT



BATHROOMS



17' 3" TO SKYLIGHT

SKYLIGHT



6' 9" STORAGE AREA CEILING

BOSWORTH SUPPORT AREA / WALK IN

- ◇ Full kitchen ventilation system
- ◇ Electric upgrades (2010 & 2017)
- ◇ Electric heat
- ◇ Separate meter for lights, outlets and AC
- ◇ Gas Stove
- ◇ Sprinklers in place
- ◇ Ansul System
- ◇ Fire Alarm
- ◇ Comcast wired
- ◇ Furniture, Fixtures & Equipment included
- ◇ 2am Malt & Wine License for sale or lease (optional)

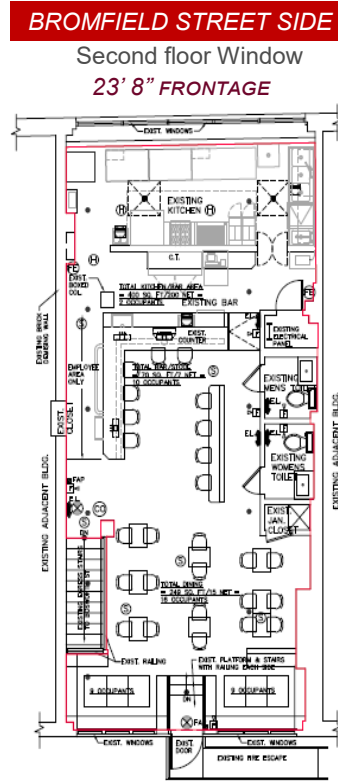
BOSWORTH

Boston, MA 02108

Former “Barracuda Tavern” bar and restaurant

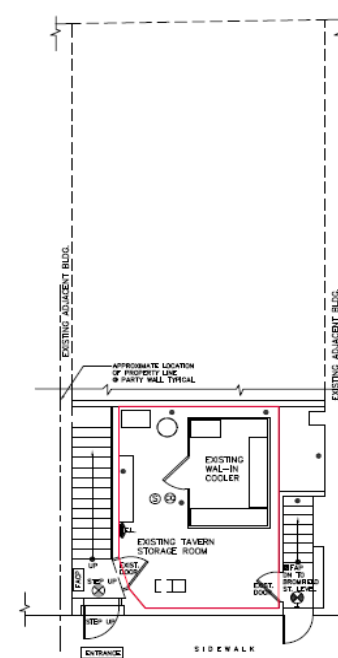


FLOOR PLANS; Bosworth Ground floor & Second floor



Second Floor

1,173 SF
Bar &
Restaurant



Public & Support area Entrances at Bosworth Street grade

244 SF

Note: Every effort has been made to furnish the most accurate information available on this property. However, all statements and conditions contained herein are subject to errors, omissions, prior lease, sale or removal from the market without notice.