

385 CHARLES STREET

aka Six Whittier Place, Boston, MA 02114

BUY OR LEASE

SIX WHITTIER PLACE

...up to 1,890 sf - ground floor condo


CRE
Brokerage
SPECIALISTS IN COMMERCIAL REAL ESTATE
Sixty State Street
Boston, MA 02109
p. 617 725 0200

385 CHARLES STREET



GROUND FLOOR CONDO - 2 Contiguous Units;

1,243 sf | Unit 114S-6

647 sf | Unit 114S-6

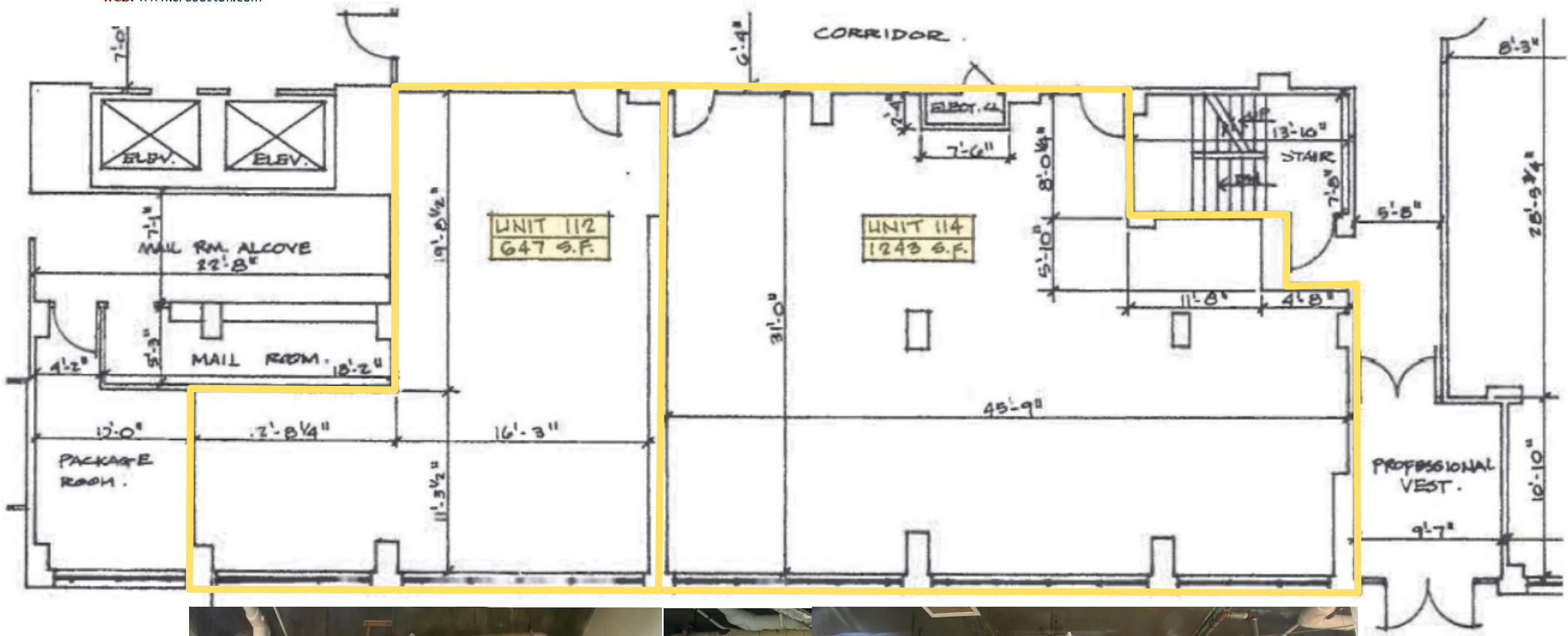
TOTAL: 1,890 sf

BEACON HILL MEDICAL AREA

385 CHARLES STREET

Sixty State Street
Boston, MA 02109

p: 617 542 7210
e: joe@creboston.com
web: www.creboston.com



GROUND FLOOR SPACE ...

Frontage: 75' (29' Unit 112 + 46' Unit 114)

Ceiling Heights from 11' to 16.5'

Former Dentist Practice

(NOW DEMOLISHED SHELL)



p: 617 542 7210
e: joe@creboston.com
web: www.creboston.com

MUSEUM OF SCIENCE



The Clubs at Charles River Park

Emerson Place Apartments

West End Apartments

J PACE MARKET

**Hawthorne
Place
Condos**

Massachusetts
General Hospital

Massachusetts Eye & Ear Infirmary

LIBERTY
HOTEL

**WYNDAM
HOTEL**

SAVENORS MARKET

STARBUCKS

RED HAT

Spaulding
Rehabilitation Hospital

NORTH STATION
COMMUTER RAIL

TD BOSTON GARDEN

**2 MILLION
SQUARE FEET OF OFFICE SPACE
IN THE
NORTH STATION MARKET**

EDWARD BROOKE
COURTHOUSE &
REGISTRY OF DEEDS

**BOSTON POLICE
DISTRICT A-1**

US IMMIGRATION
COURT

385 CHARLES STREET

Sixty State Street
Boston, MA 02109

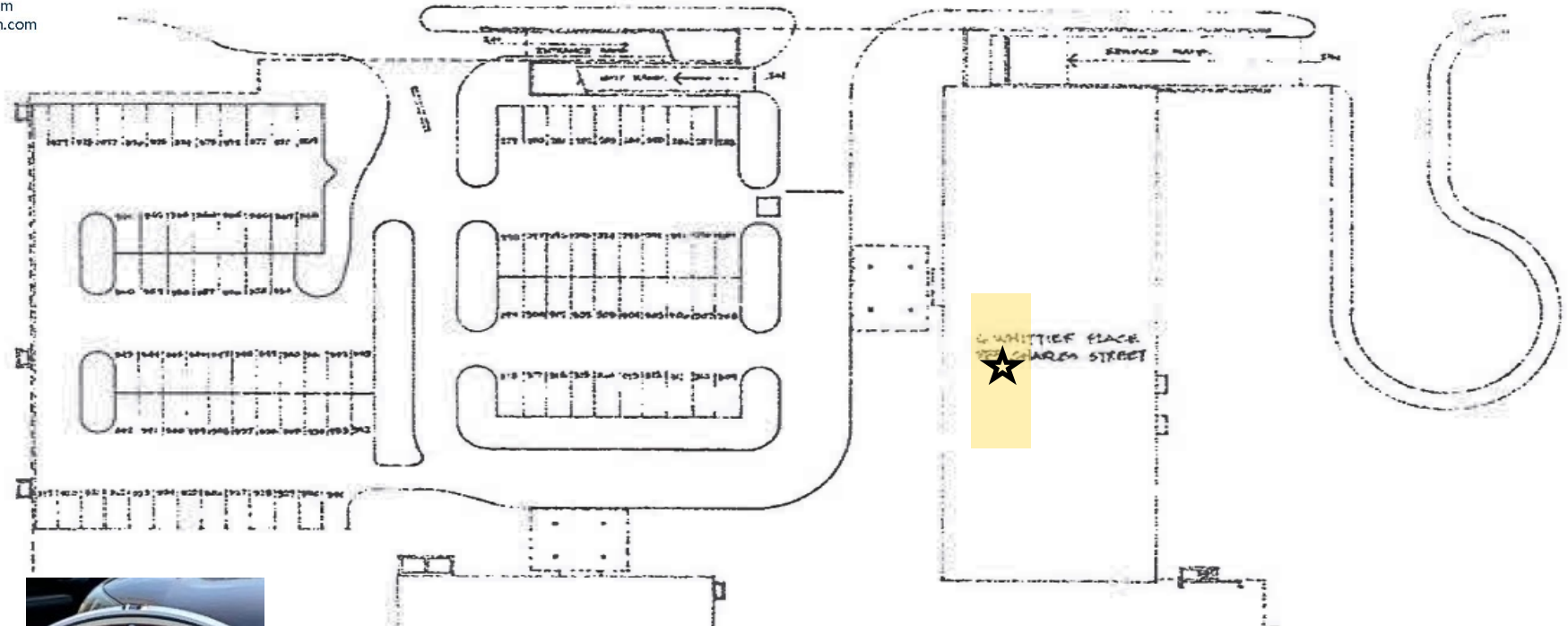
p: 617 542 7210
e: joe@creboston.com
web: www.creboston.com

Deeded Parking

- 5 spaces;
- 3 surface lot
- 2 garage

Space Numbers

17
290
291
292
295



385 CHARLES STREET

Sixty State Street
Boston, MA 02109

p: 617 542 7210
e: joe@creboston.com
web: www.creboston.com

Amenities

Indoor and Outdoor
Pool

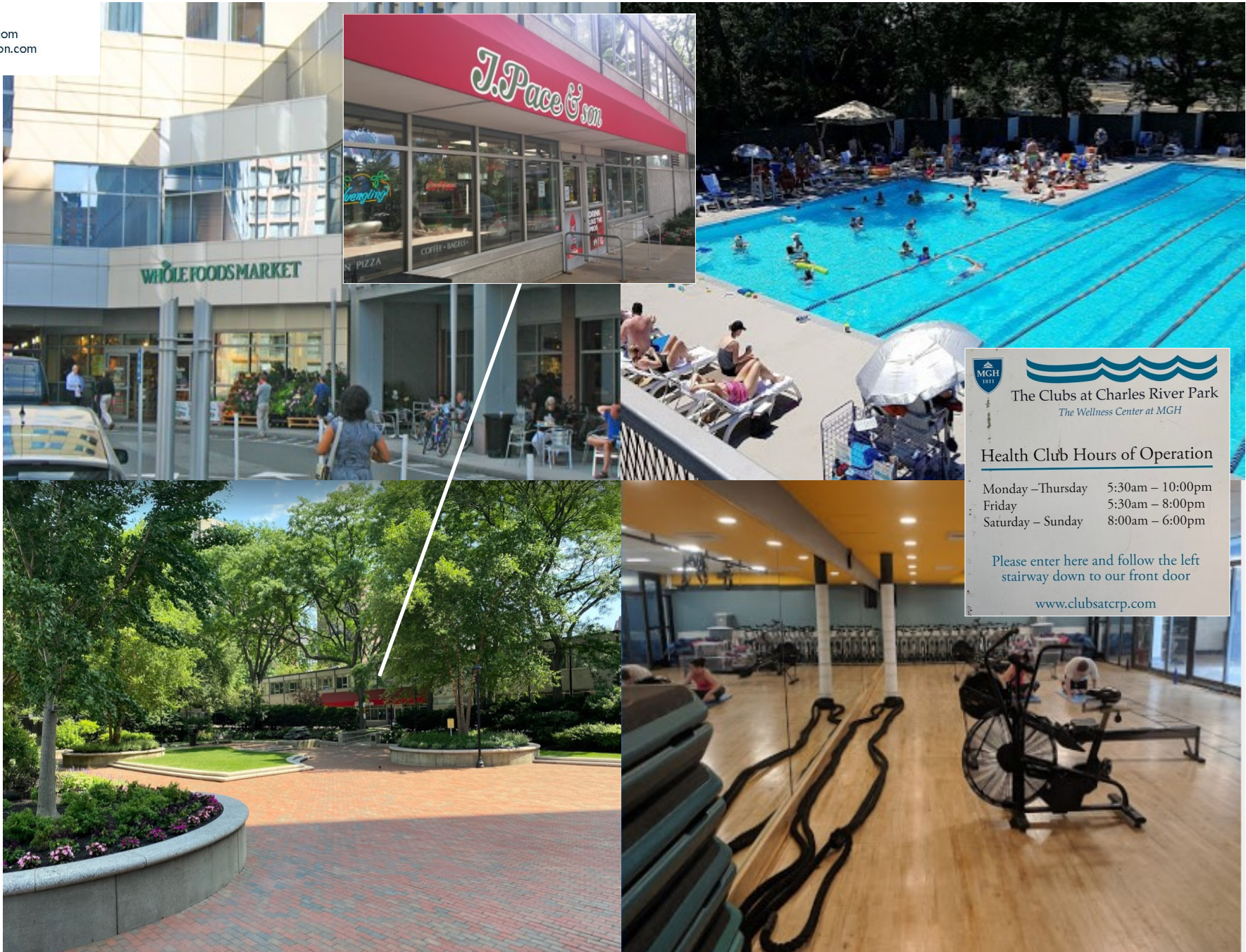
On site Parking

Fitness Center

Outdoor Space

Markets

Public Transportation



The Clubs at Charles River Park
The Wellness Center at MGH

Health Club Hours of Operation

Monday – Thursday	5:30am – 10:00pm
Friday	5:30am – 8:00pm
Saturday – Sunday	8:00am – 6:00pm

Please enter here and follow the left stairway down to our front door

www.clubsatcrp.com